



End-Stage Renal Disease
Network of New England

2013 Statistical Summary

July 2014
Prepared by:
IPRO ESRD Network of New England
1952 Whitney Avenue
2nd Floor
Hamden, CT 06517
Phone: (203) 387-9332
Fax: (203) 389-9902
www.networkofnewengland.org

Developed while under contract with:
U.S. Department of Health and Human Services
Centers for Medicare & Medicaid Services
for Contract Number HHSM-500-2013-NW001C



Nobska Point Light, Woods Hole, MA

END STAGE RENAL DISEASE STATISTICS – NEW ENGLAND

The IPRO ESRD Network of New England developed the statistical summary report of the most frequently requested demographic information related to the ESRD patient population in the six New England states. This 2013 statistical report contains data displayed for each of the six states and Network. Several of the tables and figures have trend data.

HIGHLIGHTS:

[New ESRD Patients Initiating Dialysis](#) – Page 3

Data are reported by the first outpatient facility providing chronic dialysis. The average age of these patients continues to rise. In 1989, the average age for new patients was 56; in 2013, it is 65 years old, an indicator of a more complex patient population requiring additional geriatric clinical services. Incidence decreased by a 1 percent between 2012 and 2013.

[Prevalence of ESRD Dialysis Patients by State of Provider](#) – Page 4

In the mid-1990s, an annual increase in the number of dialysis patients was observed at approximately 6 to 9 percent per year. However, the annual prevalence growth in recent years for New England has been around 3 percent, with an increase of 1 percent between 2012 and 2013.

[Dialysis Patient Characteristics](#) – Page 5

In 2013, 41 percent of dialysis patients have diabetes as their primary cause of renal failure, followed by 20 percent with hypertension. More males (58 percent) than females (42 percent) are on dialysis. More than half of total prevalent patients (52 percent) were age 65 or older.

[In-center & Home Patients in New England](#) – Pages 6 - 15

Number of patients by dialysis provider is displayed by state.

❑ **ESRD Resources in New England** – Page 16

The number of ESRD providers increased by 1.0% in 2013. This table lists the number of ESRD providers and the number of chronic dialysis treatment stations by state and Network.

❑ **Dialysis Prevalence by Modality: State and Network 2013** – Page 17

This Network has 11.5% of the dialysis population receiving home dialysis. There is a wide variation among the states in the proportion of patients at home. For 2013, the lowest is Rhode Island (3.8%) and the highest is Connecticut 16.1%

❑ **Transplant Data by Year** – Pages 18

This table reports the number of kidney transplants performed by each transplant center in New England between 1989– 2013..

❑ **Kidney Transplantation by Donor Type** – Page 19

In 2013, 40.5% of the transplants performed were from living (related and non-related) donors. The percent of deceased donor transplantation is 59.5%.

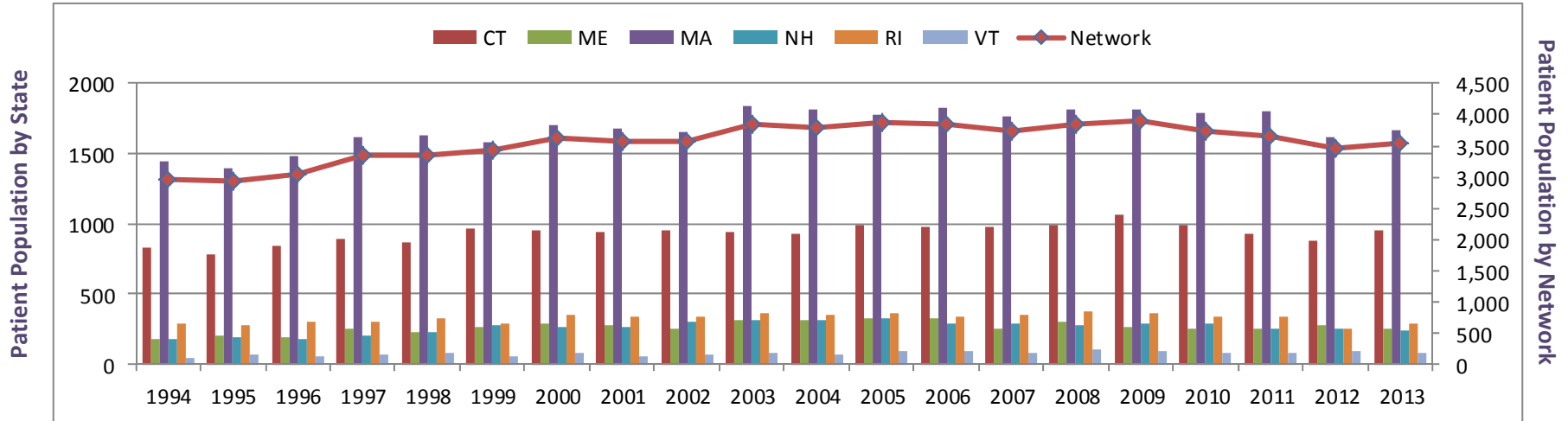
❑ **Dialysis Deaths** – Page 20

The number of patients that died in 2013 showed a little increase from 2012.

❑ **Vocational Rehabilitation** – Page 21

The annual 2013 facility survey indicated that 16.7% of ESRD patients between the ages of 18–54 received either vocational rehabilitation services, or were full-time or part-time employees, or students. The number of facilities that provide shifts after 5 PM in 2013 was 39%.

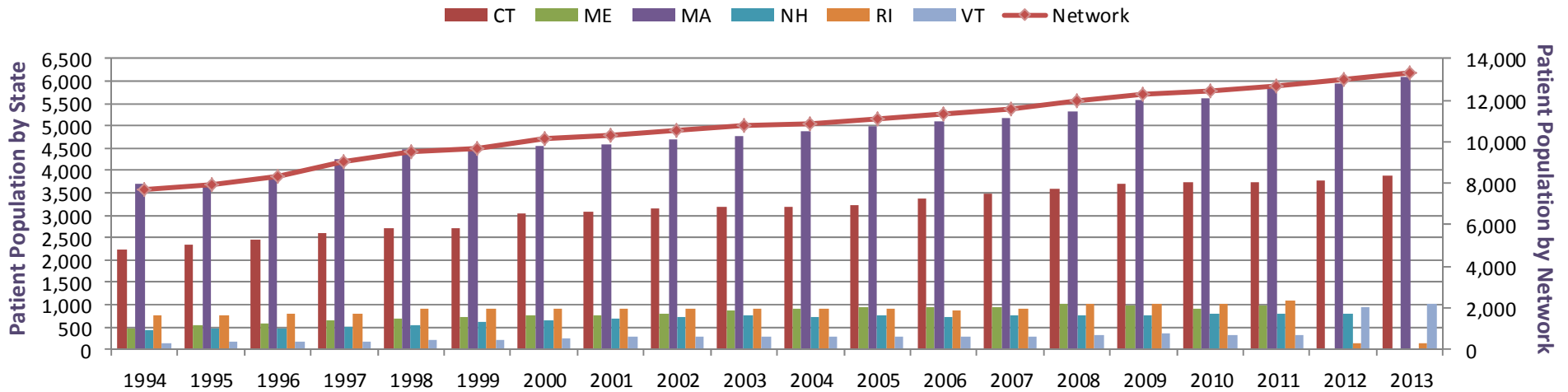
New ESRD Patients Initiating Dialysis by State of Provider 1994 – 2013



Year	CT	ME	MA	NH	RI	VT	Network	Year	CT	ME	MA	NH	RI	VT	Network
1994	828	185	1,446	175	295	45	2,974	2004	932	311	1,810	310	353	70	3,786
1995	788	207	1,396	186	274	72	2,923	2005	996	327	1,773	326	360	92	3,874
1996	844	187	1,480	181	302	61	3,055	2006	982	328	1,825	293	335	93	3,856
1997	895	253	1,620	205	301	71	3,345	2007	977	258	1,770	290	355	82	3,732
1998	863	225	1,629	228	331	75	3,351	2008	986	301	1,811	273	371	107	3,852
1999	971	261	1,586	274	292	62	3,446	2009	1,060	270	1,817	289	363	93	3,892
2000	955	288	1,701	260	353	79	3,636	2010	994	249	1,791	284	338	77	3,733
2001	937	276	1,683	266	339	62	3,563	2011	929	259	1,798	257	339	80	3,662
2002	953	258	1,656	298	340	69	3,574	2012	877	1,622	278	256	248	92	3,449
2003	946	313	1,837	309	366	77	3,848	2013	954	1,671	256	242	294	81	3,551

Source: Standard Information Management System (SIMS) and CROWNWeb (2012 onwards) (Prepared May 2014)

Prevalence of ESRD Dialysis Patients by State of Provider 1994 – 2013

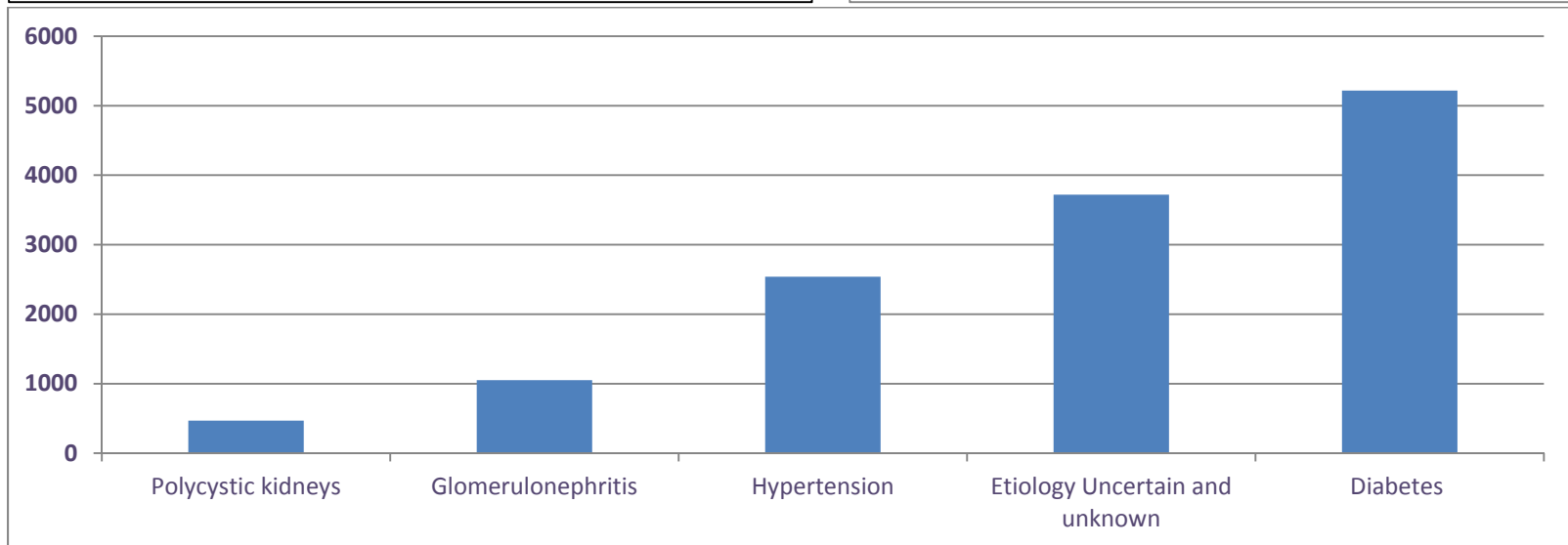
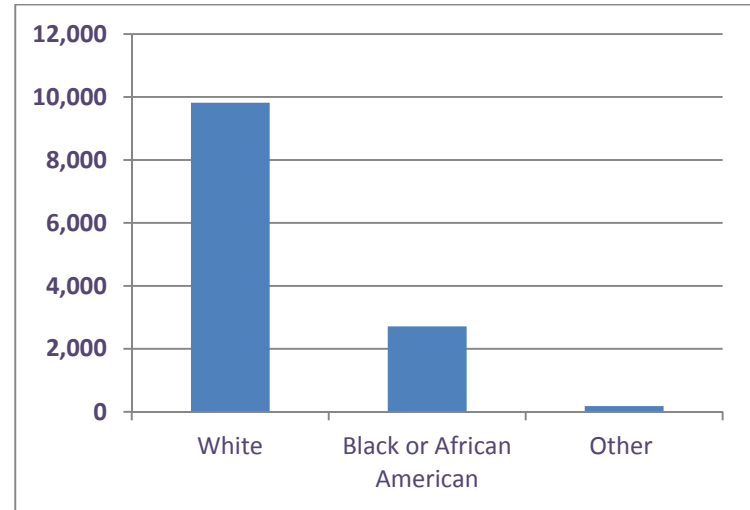
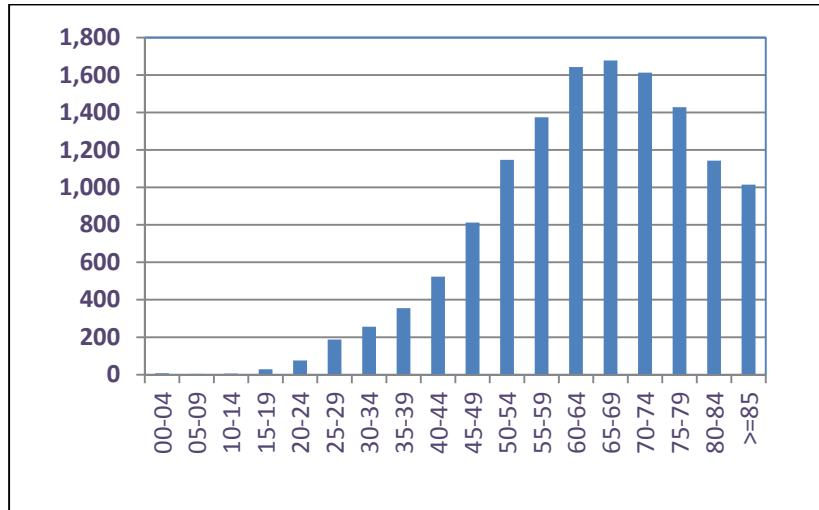


Year	CT	ME	MA	NH	RI	VT	Network	Year	CT	ME	MA	NH	RI	VT	Network
1994	2,214	473	3,683	421	751	134	7,676	2004	3,168	916	4,880	732	913	277	10,886
1995	2,328	534	3,683	457	764	153	7,919	2005	3,237	927	4,981	758	908	289	11,100
1996	2,442	572	3,895	451	799	165	8,324	2006	3,377	958	5,091	731	880	291	11,328
1997	2,607	655	4,271	493	807	182	9,015	2007	3,466	946	5,175	754	922	295	11,558
1998	2,696	690	4,474	531	897	221	9,509	2008	3,591	1,000	5,325	747	999	304	11,966
1999	2,725	732	4,472	604	901	213	9,647	2009	3,706	962	5,559	746	1,010	340	12,323
2000	3,035	752	4,535	648	920	241	10,131	2010	3,732	922	5,631	799	1,020	327	12,431
2001	3,083	767	4,601	682	910	266	10,309	2011	3,739	967	5,825	784	1,077	306	12,698
2002	3,146	806	4,698	732	894	272	10,548	2012	3,763	5,957	999	801	137	960	12,996
2003	3,196	870	4,783	751	903	288	10,791	2013	3,902	6,102	974	802	140	1,002	13,297

Source: Standard Information Management System (SIMS) and CROWNWeb (2012 onwards) (Prepared May 2014)

Dialysis Patient Characteristics in New England

Dialysis Population 12/31/13



Source: Standard Information Management System (SIMS) and CROWNWeb (2012 onwards) (Prepared May 2014)

In-center & Home Patients in New England by Provider

Connecticut Dialysis Providers as of 12/31/13

Facility Name	Facility CCN	In Center	Home	Total
BLACK ROCK DIALYSIS	072535	56	0	56
Bloomfield Dialysis	072528	62	10	72
BRANFORD DIALYSIS	072517	54	0	54
Bridgeport Dialysis	072501	240	72	312
Central Ct Dialysis Center	072508	45	5	50
Comprehensive Dialysis Care LLC	072542	38	9	47
DANBURY DIALYSIS CENTER	072544	118	20	138
DaVita Waterbury Heights Dialysis	072533	64	24	88
Dialysis Center Of Newington	072505	51	9	60
DSI North Haven	072532	54	0	54
DSI Orange Dialysis	072539	56	17	73
East Hartford Dialysis Center	072509	74	16	90
Enfield Dialysis Center	072506	58	0	58
Farmington Dialysis	072545	11	1	12
FMC DIALYSIS SERVICES FORESTVILLE	072527	48	12	60
FMC OF HARTFORD	072531	51	6	57
FMC of Western Hartford	072540	43	12	55
Fresenius Medical Care of Southington	072534	40	3	43
Greater Waterbury DaVita Dialysis	072511	135	52	187
Hamden Dialysis	072543	27	0	27
HARTFORD DIALYSIS	072516	130	25	155
Hartford Hospital	070025	175	7	182
Liberty Dialysis - Fairfield	072536	26	0	26

Source: Standard Information Management System (SIMS) and CROWNWeb (2012 onwards) (Prepared May 2014)

Facility Name	Facility CCN	In Center	Home	Total
Manchester Dialysis Center	072538	62	12	74
MIDDLESEX DIALYSIS CENTER, LLC.	072524	78	10	88
Milford Dialysis	072514	80	0	80
Milford Dialysis Center	072513	0	0	0
New Britain General Hospital	070035	101	18	119
New Haven Dialysis	072507	109	68	177
New Haven Home Dialysis	072503	0	61	61
New London Dialysis	072515	94	14	108
NORTH HAVEN DIALYSIS CENTER	072537	71	0	71
NORWICH DIALYSIS	072520	70	13	83
Physicians Dialysis Inc., - Rocky Hill	072518	52	22	74
Shelton Dialysis	072510	87	0	87
Shoreline Dialysis Center	072522	71	0	71
SOUTH NORWALK DIALYSIS	072521	115	16	131
St. Raphael Dialysis Center - New Haven	072512	178	8	186
Stamford Dialysis	072504	155	28	183
Torrington Dialysis	072523	55	23	78
UCONN DIALYSIS CENTER	072519	68	15	83
VA Medical Center - West Haven	07003F	35	1	36
VERNON DIALYSIS CENTER	072529	73	18	91
Willard Avenue Dialysis	072541	22	2	24
WINDHAM DIALYSIS CENTER	072530	30	0	30
CT Totals		3,272	630	3,902

Source: Standard Information Management System (SIMS) and CROWNWeb (2012 onwards) (Prepared May 2014)

Maine Dialysis Providers as of 12/31/13

Facility Name	Facility CCN	In Center	Home	Total
Androscoggin Kidney Center	202506	56	8	64
Boyd Dialysis	202512	111	25	136
Casco Bay Dialysis Facility	202505	82	1	83
Coastal Dialysis Center	202502	53	1	54
County Dialysis Center	200018	40	0	40
DAMARISCOTTA DIALYSIS	202507	24	2	26
DCI Skowhegan	202509	31	0	31
Dialysis Clinic Inc. - Belfast	202511	20	5	25
Eastern Maine Dialysis	202514	46	0	46
Kennebec Kidney Center	202504	50	2	52
Lewiston Auburn Kidney Center	202501	53	0	53
Lincoln Lakes Region Dialysis	202513	34	0	34
MaineGeneral Medical Center	200039	49	6	55
Southern Maine Dialysis Facility	202500	81	10	91
Sunrise County Dialysis	202510	15	3	18
Umbagog Kidney Center	202508	25	5	30
VA Medical Center - Togus	20003F	17	0	17
York County Dialysis Center	202503	79	10	89
ME Totals		866	78	944

Source: Standard Information Management System (SIMS) and CROWNWeb (2012 onwards) (Prepared May 2014)

Massachusetts Dialysis Providers as of 12/31/13

Facility Name	Facility CCN	In Center	Home	Total
Advanced Directions Renal Care Center	222575	0	0	0
Advanced Kidney Therapies of Foxborough	222579^	14	9	23
Amesbury Renal Center	222532	33	0	33
ARA-Ludlow Dialysis, LLC	222580^	8	0	8
Berkshire Medical Center	220046	99	11	110
Boston Dialysis	222526	166	59	225
Boston Dialysis Center (BMA Boston)	222506	84	0	84
Brigham And Women's Hospital	220110	1	0	1
BROCKTON DIALYSIS CENTER, LLC	222505	64	0	64
Brockton Regional Kidney Center	222574	77	3	80
Brookline Dialysis	222529	136	38	174
Burlington Regional Dialysis	222556	83	13	96
Cape Cod Artificial Kidney Center (BMA Cape Cod)	222501	76	14	90
Chicopee Dialysis Center	222513	67	19	86
Children's Hospital Boston	223302	22	11	33
DCI Ball Square	222549	79	63	142
DCI Brigham/Faulkner	222552	131	35	166
DCI WALDEN POND	222559	42	0	42
Dialysis Center of Western Massachusetts	222571	84	17	101
Dialysis Clinic, Inc. (DCI Boston)	222508	102	0	102

Source: Standard Information Management System (SIMS) and CROWNWeb (2012 onwards) (Prepared May 2014)

Facility Name	Facility CCN	In Center	Home	Total
East Springfield Dialysis (BMA of Massachusetts)	222535	52	0	52
Fall River Kidney Center LLC	222516	123	14	137
FMC DIALYSIS SERVICES OF BLACKSTONE VALLEY	222551	83	3	86
FMC Dialysis Services of Palmer	222557	44	0	44
FMC of Newburyport	222562	46	5	51
FMC SERVICES OF STONEHAM	222524	70	0	70
Fresenius - Merrimack Valley Methuen	223501	102	0	102
Fresenius Medical Care Framingham	222504	93	2	95
FRESENIUS MEDICAL CARE OF MARLBOROUGH	222570	57	8	65
Fresenius Medical Care of Mashpee	222553	55	8	63
Fresenius Medical Care of Methuen	222565	109	11	120
Fresenius Medical Care of Plymouth Cordage	222567	77	3	80
Fresenius Medical Care of Wareham	222577	25	1	26
Goddard Brockton Kidney Center	222523	115	14	129
Hampshire County Dialysis Center	222537	52	0	52
Hawthorn Kidney Center	222503	117	10	127
Hawthorn Kidney Center Wareham LLC	222578^	6	0	6
Heritage Dialysis Center, LLC	222572	57	4	61
Kidney Center	222500	88	15	103
Lowell General Hospital Dialysis	220082	190	8	198
Martha's Vineyard Hospital	220123	8	0	8
Mary Eliza Mahoney Dialysis Center (BMA Of Massachusetts)	222525	104	0	104
Massachusetts General Hospital	220071	5	22	27

Source: Standard Information Management System (SIMS) and CROWNWeb (2012 onwards) (Prepared May 2014)

Facility Name	Facility CCN	In Center	Home	Total
Medford Dialysis Center (BMA Medford)	222507	92	3	95
Nantucket Cottage Hospital	220081	4	0	4
New Bedford Dialysis	222530	75	11	86
North Andover Renal Center	222545	89	25	114
North Suburban Dialysis Center (BMA Essex County)	222512	112	2	114
Northeast Cambridge Dialysis	222533	63	10	73
Norwood Dialysis Center	222548	22	0	22
PDI - WORCESTER	222564	125	38	163
Peabody Dialysis Center	222546	83	4	87
Physicians Dialysis Inc., - Fitchburg	222536	89	18	107
Pioneer Valley Dialysis Center	222538	115	9	124
Quality Care Dialysis Center	222519	77	0	77
QUINCY DIALYSIS CENTER	222576	40	0	40
Saint Elizabeth's Medical Center of Boston	220036	94	2	96
Saint Vincent's Hospital	220028	64	18	82
Salem Northeast Dialysis	222543	90	7	97
SOUTH BERKSHIRE COUNTY DIALYSIS CENTER	221302	21	0	21
South County Dialysis Center	222561	78	2	80
South Suburban Dialysis Facility	222515	79	5	84
Springfield Dialysis Center	222560	86	1	87
Taunton Regional Dialysis Center	222573	106	6	112
The Dialysis Center at Waltham	222568	44	0	44

Source: Standard Information Management System (SIMS) and CROWNWeb (2012 onwards) (Prepared May 2014)

Facility Name	Facility CCN	In Center	Home	Total
U-Mass Memorial Health Care Systems	220163	3	0	3
UMass Memorial Medical Center ESRD	223504	3	0	3
University Dialysis Center (BMA of Shrewsbury)	222521	71	10	81
VA Medical Center - Boston	22010F	21	0	21
WELLESLEY DIALYSIS	222534	57	8	65
WELLINGTON CIRCLE DIALYSIS CENTER	222542	87	11	98
Western Mass. Kidney Center (BMA Springfield)	222502	131	0	131
Westwood Dialysis Center (BMA Westwood)	222511	74	0	74
Weymouth Dialysis	222517	120	11	131
Woburn Dialysis	222520	59	11	70
Yankee Family Dialysis Center	222539	50	7	57
MA Totals		5,485	653	6,138

Source: Standard Information Management System (SIMS) and CROWNWeb (2012 onwards) (Prepared May 2014)

New Hampshire Dialysis Providers as of 12/31/13

Facility Name	Facility CCN	In Center	Home	Total
Bedford Dialysis DaVita	302513	10	3	13
Central New Hampshire Kidney Center	302503	42	0	42
FMC DIALYSIS SERVICES OF EXETER	302506	50	0	50
FMC Strafford County Dialysis	302505	70	0	70
Fresenius Medical Care Londonderry	302510	29	0	29
Fresenius Medical Care of Cochecho River	302514^	44	0	44
Fresenius Medical Care of Lancaster	302508	27	0	27
Fresenius Medical Care of Lebanon	302509	68	12	80
Fresenius Medical Care Southern NH Dialysis Center	302515^	15	1	16
Manchester Kidney Center	302502	93	15	108
Monadnock Dialysis Center	302504	58	0	58
Mount Washington Valley Dialysis	302512	18	2	20
Nashua Dialysis	302507	87	26	113
New Hampshire Kidney Center (FMC)	302500	68	11	79
Seacoast Dialysis Center	302501	51	19	70
Steam Dialysis	302511	25	6	31
NH Totals		755	95	850

Source: Standard Information Management System (SIMS) and CROWNWeb (2012 onwards) (Prepared May 2014)

Rhode Island Dialysis Providers as of 12/31/13

Facility Name	Facility CCN	In Center	Home	Total
Davita North Providence Renal Center	412506	69	11	80
Dialysis Center of East Providence	412512	71	15	86
DIALYSIS CENTER OF JOHNSTON	412514	65	0	65
Dialysis Center of Pawtucket	412509	75	0	75
Dialysis Center of Providence	412510	64	0	64
Dialysis Center of Rhode Island Hospital - Warren Avenue	413501^	22	0	22
Dialysis Center of Tiverton	412508	76	0	76
Dialysis Center of West Warwick	412504	84	0	84
Dialysis Center of Westerly	412502	39	0	39
Dialysis Center of Woonsocket	412503	70	0	70
Fresenius Medical Care of Warwick	412501	113	7	120
Miriam Hospital	410012	0	0	0
NNA - Pawtucket	412511	68	0	68
NNA of Providence	412505	104	4	108
Rhode Island Hospital	410007	2	0	2
The Dialysis Center of Rhode Island Hospital	413500	78	6	84
VA Medical Center - Providence	41002F	33	0	33
Wakefield Dialysis Center	412507	41	0	41
RI Totals		1,074	43	1,117

Source: Standard Information Management System (SIMS) and CROWNWeb (2012 onwards) (Prepared May 2014)

Vermont Dialysis Providers as of 12/31/13

Facility Name	Facility CCN	In Center	Home	Total
Fletcher Allen Healthcare - Barre Satellite	473500	32	0	32
Fletcher Allen Healthcare - Chittenden County Dialysis	473503	89	28	117
Fletcher Allen Healthcare - Med Ctr Hosp of VT Campus	470003	9	0	9
Fletcher Allen Healthcare - North Country Dialysis Unit	473504	18	0	18
Fletcher Allen Healthcare - RPMC Satellite	473501	49	0	49
Fletcher Allen Healthcare - St. Albans Satellite	473502	42	0	42
FMC of ST.Johnsbury Dialysis	472501	30	0	30
SOUTHWESTERN VERMONT RENAL CENTER	472500	40	0	40
VT Totals		309	28	337
Network Totals		11,761	1,527	13,288

Source: Standard Information Management System (SIMS) and CROWNWeb (2012 onwards) (Prepared May 2014)

ESRD Resources in New England 12/31/13

State	Dialysis Stations*	Percent of Total	Dialysis Providers	Percent of Total	Transplant Centers	Percent of Total
CT	934	29.14	45	24.59	2	13.30
ME	255	7.96	18	9.84	9	60.00
MA	1350	42.12	78	42.62	1	6.70
NH	257	8.02	16	8.74	1	6.70
RI	322	10.05	18	9.84	1	6.70
VT	87	2.71	8	4.37	1	6.70
Totals	3,205	100	183	100	15	100

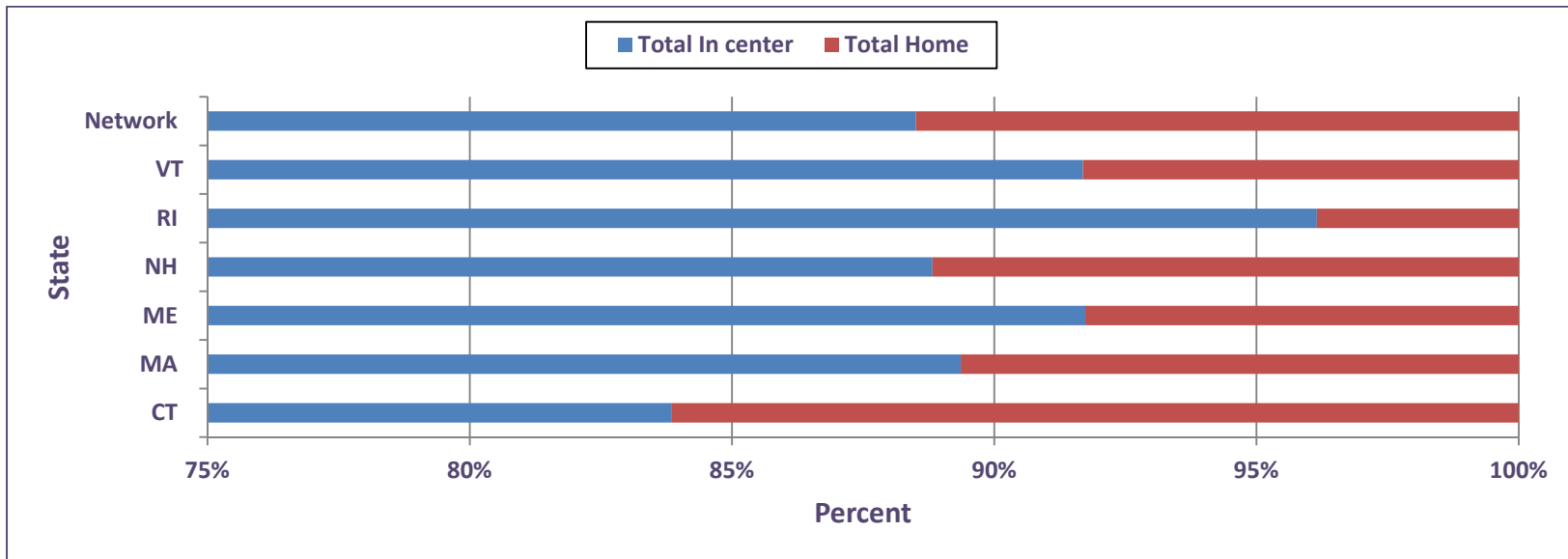
Note: New England ESRD (outpatient) dialysis providers and kidney transplant centers are certified by either Medicare or the Veterans Administration Program.

Source: Standard Information Management System (SIMS) and CROWNWeb (2012 onwards) (Prepared May 2014)

Dialysis Prevalence by Modality: Provider of Service 2013

State	Hemo	CAPD	CCPD	Other	Total Home	Incenter Hemo	PD	Total In Center	Total In-center and Home
CT	68	126	435	1	630	3,270	2	3,272	3,902
MA	92	103	458	0	653	5,476	9	5,485	6,138
ME	16	13	49	0	78	866	0	866	944
NH	21	11	63	0	95	755	0	755	850
RI	4	4	35	0	43	1,074	0	1,074	1,117
VT	15	6	7	0	28	309	0	309	337
Network	216	263	1,047	1	1,527	11,750	11	11,761	13,288

In-center Dialysis and Home Dialysis Percentage of Total Patients per State



Source: Standard Information Management System (SIMS) and CROWNWeb (2012 onwards) (Prepared May 2014)

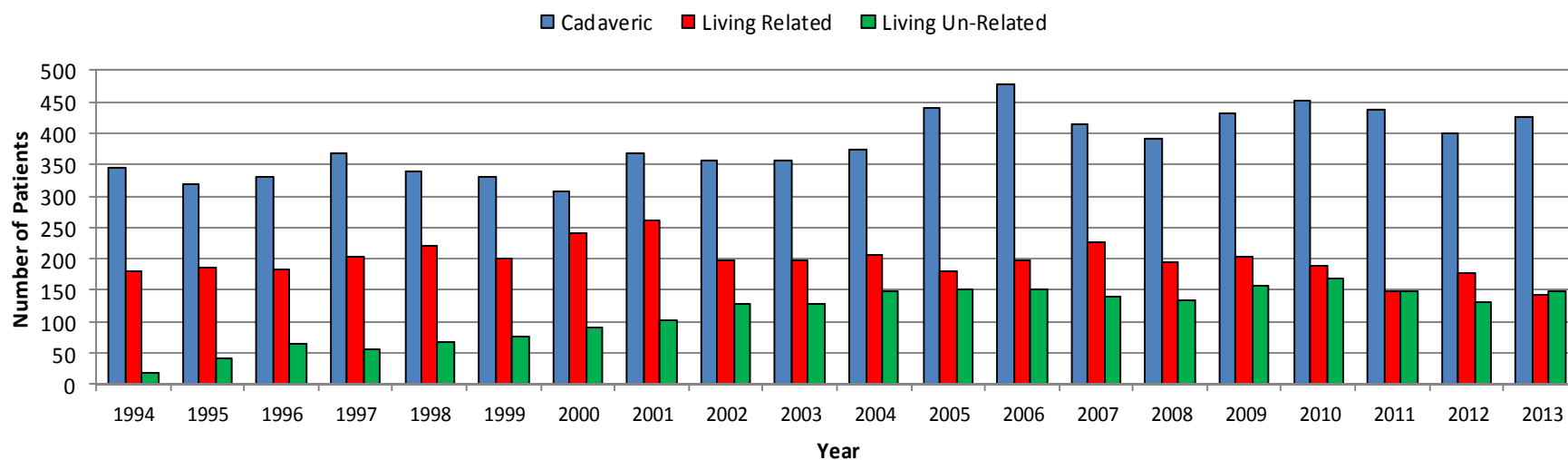
Patients Transplanted by Year

Kidney Transplant Centers	2001	2002	2003	2004	2005	2006	2007	2008	2009	2010	2011	2012	2013
Baystate Medical Center	57	39	32	36	24	32	30	23	33	39	31	27	36
Beth Israel Deaconess Medical Ctr.	49	42	78	79	88	60	69	46	76	61	51	46	68
Brigham and Women's Hospital	45	44	53	67	65	100	84	69	64	70	45	53	50
Children's Hospital	17	23	19	12	16	16	18	25	24	23	27	23	24
Dartmouth Hitchcock Medical Center	25	31	35	36	40	51	52	41	51	56	57	37	34
Fletcher Allen Health Care Med. Ctr. of VT	6	2	36	23	37	47	41	46	31	42	36	23	25
Hartford Hospital	72	70	58	63	67	52	54	52	55	53	43	53	43
Lahey Clinic	24	28	33	34	33	44	31	39	32	43	40	43	39
Maine Medical Center	83	60	64	60	53	72	58	44	59	41	46	45	38
Massachusetts General Hospital	69	69	78	76	102	88	84	86	96	82	76	84	100
New England Medical Center	54	60	51	48	38	45	47	36	38	36	42	25	23
Rhode Island Hospital	84	85	68	71	72	67	46	38	52	49	49	66	42
University Hospital – BU Medical Ctr.	33	21	20	33	50	39	51	50	49	49	55	50	51
University of Mass. Medical Center	46	22	39	29	29	29	40	24	38	36	27	30	32
Yale New Haven Hospital	67	86	73	61	58	81	74	100	92	125	110	106	108
Network Total	731	682	737	728	772	823	779	719	790	805	735	711	711

Source: Standard Information Management System (SIMS) and CROWNWeb (2012 onwards) (Prepared May 2014)

Renal Transplants by Donor Type

All Transplant Centers in New England 1994-2013



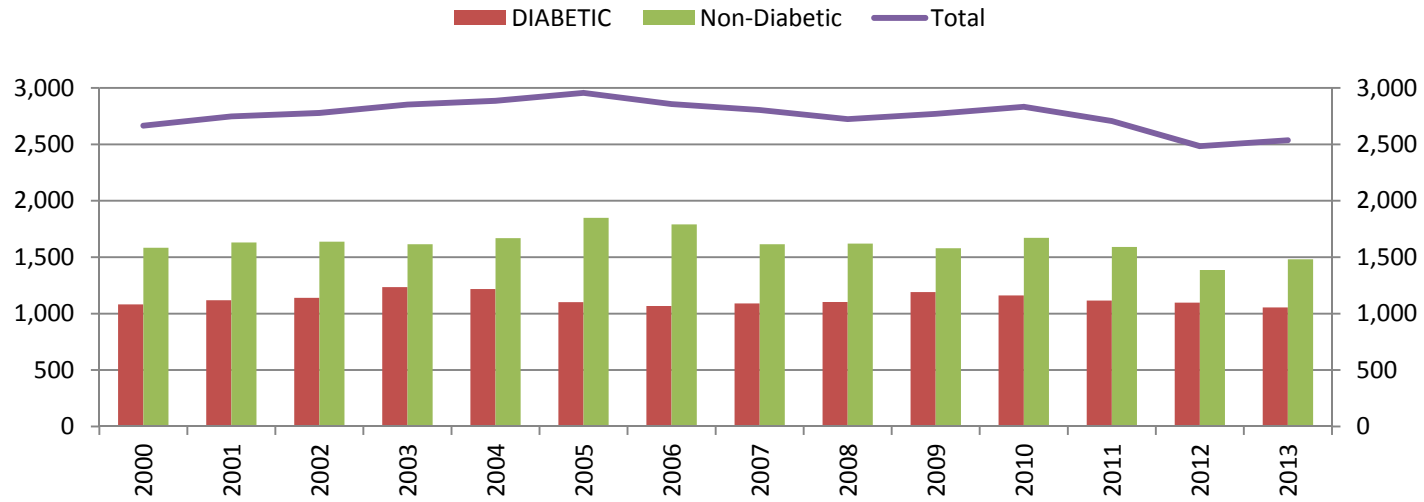
Year	Cadaveric	Living Related	Living Un-Related	Total
1994	344	181	19	544
1995	320	187	40	547
1996	332	183	65	580
1997	368	202	57	627
1998	340	220	68	628
1999	330	200	75	605
2000	308	242	91	641
2001	368	262	103	733 ^a
2002	358	197	128	683 ^b
2003	358	197	128	739 ^a
2004	374	206	148	728
2005	440	180	152	772
2006	477	198	150	825 ^a
2007	414	227	139	780 ^b
2008	392	196	134	722 ^c
2009	432	202	156	790
2010	453	189	168	810 ^d
2011	439	149	147	735
2012	401	178	131	710
2013	426	142	148	716

^a This number includes 2 patients each having 2 transplants in YR 2001, YR 2003 and YR 2006

^b This number includes 1 patient having 2 transplants in YR 2002 and 2007. ^c this number includes one pt transplanted 3 times and another pt transplanted twice.

^d this number includes 5 patients transplanted twice.

Dialysis Patient Deaths



Year	PATIENT DEATHS		
	DIABETIC	NON-DIABETIC	TOTAL
2000	1,081	1,583	2,665
2001	1,118	1,630	2,748
2002	1,139	1,638	2,777
2003	1,234	1,615	2,853
2004	1,217	1,668	2,885
2005	1,102	1,848	2,956
2006	1,067	1,790	2,857
2007	1,090	1,614	2,804
2008	1,103	1,620	2,723
2009	1,191	1,579	2,770
2010	1,161	1,671	2,832
2011	1,116	1,590	2,706
2012	1,097	1,387	2,484
2013	1,055	1,481	2,536

Source: Standard Information Management System (SIMS) and CROWNWeb (2012 onwards) (Prepared May 2014)

Vocational Rehabilitation by State for 2013

State	Number of Dialysis Patients Aged 18 through 54	Patients Receiving Services from Vocational Rehab	Patients Employed Full-Time or Part-Time	Patients Attending School Full-Time or Part-Time	Shift After 5PM
CT	1,039	7	166	7	13
MA	1,524	15	233	10	37
ME	224	6	40	3	7
NH	214	0	23	1	9
RI	261	4	33	3	3
VT	66	0	7	0	3
Network	3,328	32	502	24	72

Source: Standard Information Management System (SIMS) and CROWNWeb (2012 onwards) (Prepared May 2014)